



RAPID'Chromogenic Media

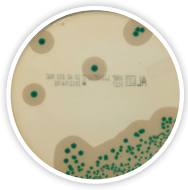
Culture media for the detection and enumeration of food and environmental pathogens and quality indicators



RAPID¹Chromogenic Media Technology and Applications

RAPID¹Chromogenic Media are a complete range of highly selective chromogenic media designed to detect and enumerate a variety of microorganisms in food and environmental samples. They offer economical, labor-saving protocols and provide a shorter time to results than classical methods. In addition, the combination of the selected chromogenic mixture and high-quality raw material allows a high level of contrast, high selectivity, and high sensitivity, making the plates easy to read.

AL (Agar *Listeria* according to Ottaviani and Agosti)



Applications

- Detection of *L. monocytogenes* and *Listeria* spp.
- Enumeration of *L. monocytogenes*
- Approved for ISO 11290-1 and 11290-2 protocols
- Recommended in FDA BAM Chapter 10
- Approved for MFLP-74 protocol



L. monocytogenes



Listeria spp.



Non-*Listeria*

Enzymatic Activity	<i>L. monocytogenes</i>	<i>Listeria</i> spp.	Non- <i>Listeria</i>
PI-PLC detection	+	-	-
β-D-Glucosidase	+	+	-

RAPID¹*B.cereus*



Applications

- Enumeration of the *Bacillus cereus* group
- Clear enumeration of the sensitive *B. cytotoxicus*
- No confirmation required
- Inhibition of background flora on raw matrices



B. cereus (i.e., *B. cereus sensu stricto*)



B. cytotoxicus



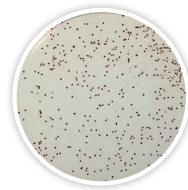
B. cereus (i.e., *B. mycooides*)



Atypical *B. cereus* (i.e., *B. thuringiensis*)

Enzymatic Activity	<i>B. cereus</i> (i.e., <i>B. cereus sensu stricto</i>)	<i>B. cytotoxicus</i>	<i>B. cereus</i> (i.e., <i>B. mycooides</i>)	Atypical <i>B. cereus</i> (i.e., <i>B. thuringiensis</i>)
Chromogenic substrate	+	+	+	+
Phospholipase	+	+	+	-

RAPID¹*Campylobacter*



Applications

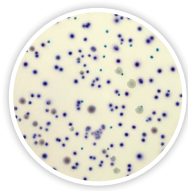
- Detection of *Campylobacter* spp.
- Enumeration of *Campylobacter* spp.
- Approved as second media in ISO/TS 10272-1 protocol
- Inhibition of competing organisms



Thermophilic *Campylobacter* spp.

Enzymatic Activity	Thermophilic <i>Campylobacter</i> spp.
Chromogenic substrate	+

RAPID¹*E.coli* 2



Applications

- Enumeration of *E. coli*
- Enumeration of other coliforms
- Differentiation by color, not gas formation
- Can be incorporated into a hygiene monitoring program



E. coli



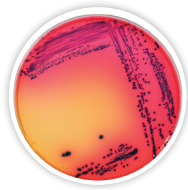
Other coliforms



Non-coliforms

Enzymatic Activity	<i>E. coli</i>	Other coliforms	Non-coliforms
Glucuronidase	+	-	-
Galactosidase	+	+	-

RAPID¹*E.coli* O157:H7



Applications

- Detection of *E. coli* O157:H7
- Approved as second media in ISO 16654 protocol
- Confirmation of iQ-Check *E. coli* O157:H7 real-time PCR results
- Detection of rare sorbitol-positive strains



E. coli O157:H7



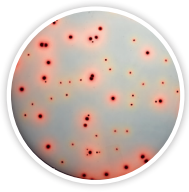
Other *E. coli*



Other bacteria

Enzymatic Activity	<i>E. coli</i> O157:H7	Other <i>E. coli</i>	Other bacteria
Glucuronidase	-	+	-
Galactosidase	+	+	-
Sorbitol	-	+	+/-

RAPID[®] *Enterobacteriaceae*



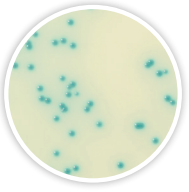
Applications

- Enumeration of *Enterobacteriaceae*
- Differentiation of colonies by size
- Surface inoculation or pour plate method
- Can be incorporated into a hygiene monitoring program



Enzymatic Activity	<i>Enterobacteriaceae</i>	Non- <i>Enterobacteriaceae</i>
Glucose fermentation	+	-

RAPID[®] *Listeria* spp.



Applications

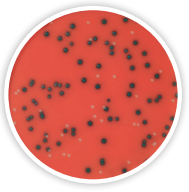
- Detection of *Listeria* spp.
- Confirmation of iQ-Check *Listeria* spp. real-time PCR results
- Can be part of an environmental monitoring program



Listeria spp.

Enzymatic Activity	<i>Listeria</i> spp.
β -D-Glucosidase	+

RAPID[®] *L. mono*



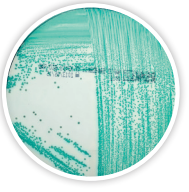
Applications

- Enumeration of *L. monocytogenes*
- Detection of *L. monocytogenes* and *Listeria* spp.
- Approved as second media in ISO 11290-1 protocol
- Recommended in FDA BAM Chapter 10
- Approved for MFHPB-30 and MFLP-74 protocols
- Confirmation of iQ-Check *Listeria monocytogenes* II real-time PCR results



Enzymatic Activity	<i>L. monocytogenes</i>	<i>L. ivanovii</i>	<i>L. innocua</i>	<i>L. welshimeri</i>
PI-PLC detection	+	+	-	-
Xylose fermentation	-	+	-	+

RAPID[®] *Sakazakii*



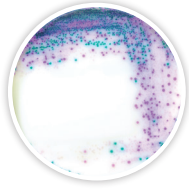
Applications

- Detection of *Cronobacter* spp.
- Approved for ISO/TS 22964:2006 protocol
- Confirmation of iQ-Check *Cronobacter* spp. real-time PCR results



Enzymatic Activity	<i>Cronobacter</i> spp.	Other <i>Enterobacteriaceae</i>
α -D-Glucosidase	+	-

RAPID[®] *Salmonella*



Applications

- Detection of *Salmonella* spp.
- Single 24 hr enrichment protocol without subculturing
- Approved as second media in ISO 6579 protocol
- Confirmation of iQ-Check *Salmonella* II real-time PCR results



Enzymatic Activity	<i>Salmonella</i> spp.	Other <i>Enterobacteriaceae</i>	<i>Proteus</i> spp.
C8 esterase	+	+	-
β -D-Glucosidase	-	+	-

RAPID[®] *Staph*



Applications

- Enumeration of coagulase-positive *Staphylococci*
- Final result in 24 hr



Enzymatic Activity	<i>Staphylococcus</i> coagulase-positive	<i>Staphylococcus</i> coagulase-negative
Potassium tellurite reduction	+	+
Egg yolk proteolysis	+	-

Validations

Chromogenic Media	NF Validation by AFNOR Certification	AOAC	NordVal	Health Canada	Chromogenic Media	NF Validation by AFNOR Certification	AOAC	NordVal	Health Canada
AL	•				RAPID' <i>Listeria</i> spp.	•	•		
RAPID' <i>B.cereus</i>	Pending				RAPID' <i>L.mono</i>	•	•	•	•
RAPID' <i>Campylobacter</i>	•				RAPID' <i>Sakazakii</i>	•			
RAPID' <i>E.coli</i> 2	•	•	•	•	RAPID' <i>Salmonella</i>	•	•	•	
RAPID' <i>E.coli</i> O157:H7	•	•			RAPID' <i>Staph</i>		•	•	
RAPID' <i>Enterobacteriaceae</i>	•								

Ordering Information

Catalog # Description

Buffered Peptone Water Broth

3554179 **Ready to use**, 225 ml x 6 bottles
 3555795 **Ready to use**, 3 L x 4 bags
 3555790 **Ready to use**, 5 L x 2 bags
 3564684 **Dehydrated base**, 500 g

Fraser 1/2 Broth

3564604 **Dehydrated base**, 500 g
 3564616 **Supplement**, 1 box, 10 vials
 3555797 **Complete medium**, 225 ml x 6 bottles
 3555794 **Complete medium**, 3 L x 4 bags

AL

3563965 **Ready to use**, 90 mm x 120 plates
 3563695 **Ready to use**, 90 mm x 20 plates
 3564043 **Dehydrated base**, 500 g
 3555200 **Base medium**, 6 x quantity for 250 ml
 3564041 **Supplement 1**, 1 box, 10 vials
 3564042 **Supplement 2**, 1 box, 10 vials

RAPID'*B.cereus*

12007304 **Ready to use**, 90 mm x 20 plates
 12007305 **Dehydrated base**, 500 g
 12007306 **Supplement 1**, 1 box, 10 vials
 12007307 **Supplement 2**, 1 box, 10 vials

RAPID'*Campylobacter*

3564295 **Dehydrated base**, 500 g
 3564296 **Supplement**, 1 box, 10 vials
 3564297 **Campylobacter Confirm Latex Kit**, 50 tests (confirmation)

RAPID'*E.coli* 2

3555299 **Ready to use**, 100 ml x 6 bottles
 3555297 **Ready to use**, 200 ml x 6 bottles
 3564024 **Dehydrated base**, 500 g

RAPID'*E.coli* O157:H7

3564748 **Dehydrated base**, 100 g
 3564610 **Novobiocin Supplement**, 1 g bottle

RAPID'*Enterobacteriaceae*

3554012 **Ready to use**, 200 ml x 6 bottles
 3564004 **Dehydrated base**, 500 g

Catalog # Description

RAPID'*Listeria* spp.

3564744 **Dehydrated base**, 500 g
 3564745 **Supplement 1**, 1 box, 10 vials
 3564746 **Supplement 2**, 1 box, 10 vials

RAPID'*L.mono*

3563964 **Ready to use**, 90 mm x 120 plates
 3563694 **Ready to use**, 90 mm x 20 plates
 3555294 **Ready to use**, 190 ml + supplement
 3564293 **Dehydrated base**, 500 g
 3564294 **Supplement 1**, 1 box, 10 vials
 3564746 **Supplement 2**, 1 box, 10 vials
 3553669 **Rhamnose Test**, 1 ml x 28 tubes

RAPID'*Sakazakii*

3563971 **Ready to use**, 90 mm x 20 plates
 3564976 **Dehydrated base**, 500 g

RAPID'*Salmonella*

3563961 **Ready to use**, 90 mm x 20 plates
 3563963 **Ready to use**, 90 mm x 120 plates
 3564705 **Dehydrated base**, 500 g
 3564709 **Enrichment supplement capsules**, 10x, 100 capsules
 3564710 **Enrichment supplement capsules**, 100 capsules
 3564712 **Enrichment supplement**, 100 analyses
 35934260 **Oxidase stripes**, pack of 50
 3553822 **ONPG Test**, 50 disks (confirmation)
 3556710 **Salmonella Latex Kit**, 75 tests (confirmation)
 3556711 **Salmonella Confirm Latex Kit**, 50 tests (confirmation)

RAPID'*Staph*

3563960 **Ready to use**, 90 mm x 20 plates
 3564704 **Dehydrated base**, 500 g

For more information and to see how our products can be incorporated into food testing workflows, visit our website:

RAPID'Chromogenic Media — bio-rad.com/rapidmedia
 iQ-Check Real-Time PCR Kits — bio-rad.com/iqcheck

Bio-Rad is a trademark of Bio-Rad Laboratories, Inc. in certain jurisdictions. iQ-Check is a trademark of Bio-Rad Europe, GmbH in certain jurisdictions. All trademarks used herein are the property of their respective owner.



**Bio-Rad
Laboratories, Inc.**

Life Science
Group

Web site bio-rad.com **USA** 1 800 424 6723 **Australia** 61 2 9914 2800 **Austria** 43 01 877 89019 **Belgium** 32 03 710 53 00 **Brazil** 55 11 3065 7550
Canada 1 905 364 3435 **China** 86 21 6169 8500 **Czech Republic** 36 01 459 6192 **Denmark** 45 04 452 10 00 **Finland** 35 08 980 422 00 **France** 33 01 479 593 00
Germany 49 089 3188 4393 **Hong Kong** 852 2789 3300 **Hungary** 36 01 459 6190 **India** 91 124 4029300 **Israel** 972 03 963 6050 **Italy** 39 02 49486600
Japan 81 3 6361 7000 **Korea** 82 2 3473 4460 **Mexico** 52 555 488 7670 **The Netherlands** 31 0 318 540 666 **New Zealand** 64 9 415 2280 **Norway** 47 0 233 841 30
Poland 36 01 459 6191 **Portugal** 351 21 4727717 **Russia** 7 495 721 14 04 **Singapore** 65 6415 3188 **South Africa** 36 01 459 6193 **Spain** 34 091 49 06 580
Sweden 46 08 555 127 00 **Switzerland** 41 0617 17 9555 **Taiwan** 886 2 2578 7189 **Thailand** 66 2 651 8311 **United Arab Emirates** 971 4 8187300
United Kingdom 44 01923 47 1301

